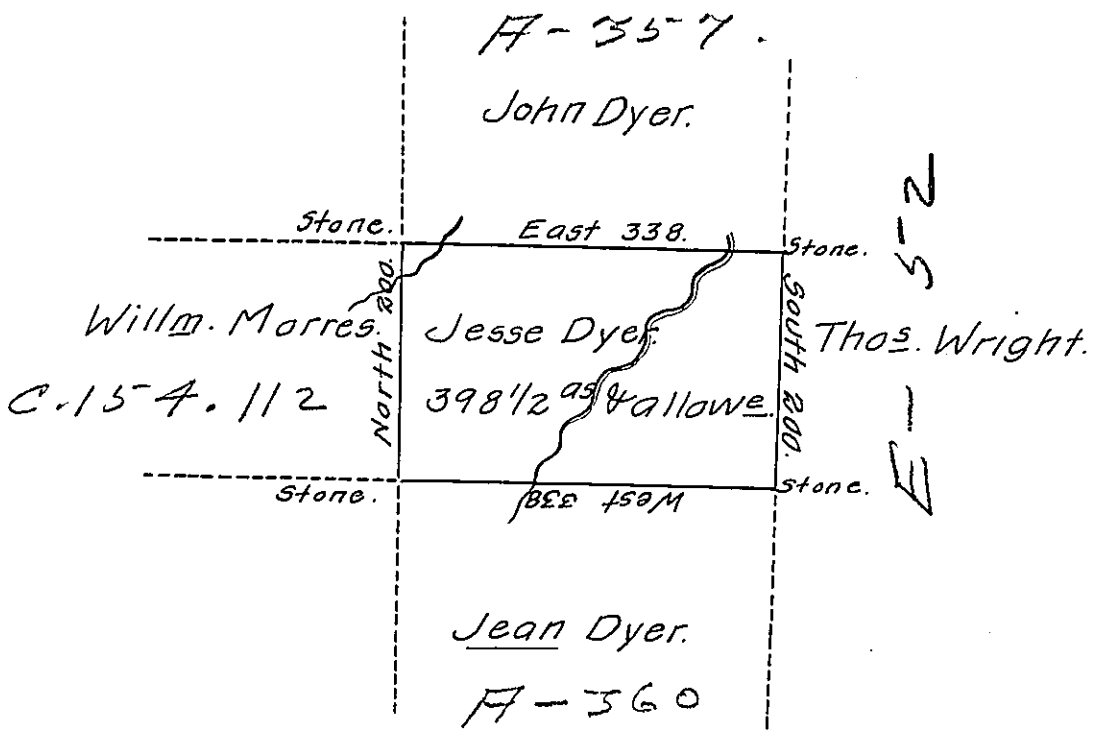


Demison -
Luzerne.



A draft of a tract of land called _____ situate on the waters of Lehi - Joining land surveyed for Jane Dyer & others in the County of Luzerne containing Three hundred and Ninety eight acres 1/2 & allowance of six & Cent. for roads &c. surveyed for Jesse Dyer the 11th Day of June, 1792 in pursuance of a warrant dated the 4th Day of April, 1792.

To

by

Obliterated.

Obliterated.

IN TESTIMONY that the above is a copy of the original remaining on file in the Department of Internal Affairs of Pennsylvania, made conformably to an Act of Assembly approved the 16th day of February, 1833, I have hereunto set my Hand and caused the Seal of said Department to be affixed at Harrisburg, this twenty fourth day of July, 1911.

Henry Houck

Secretary of Internal Affairs.